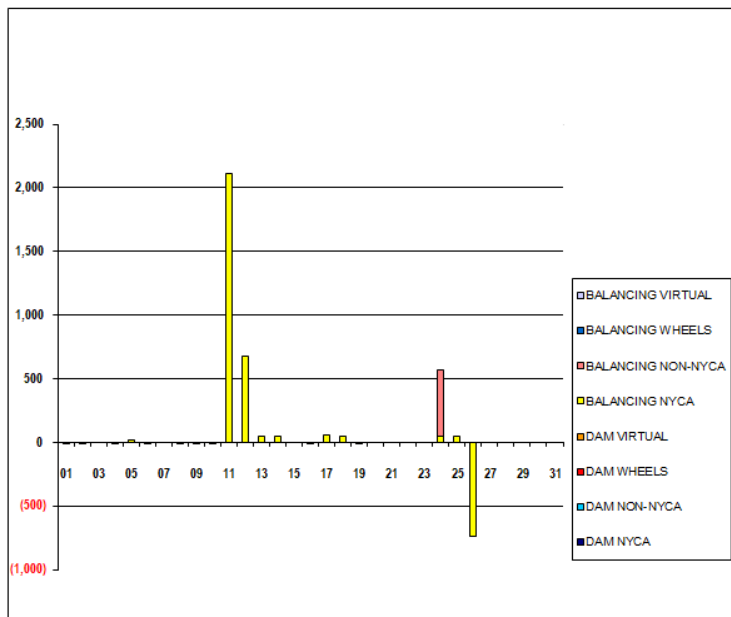


SETTLEMENTS REPORT
 June 2020 Settlement Adjustment
 July 8, 2020

Initial – Market Supply Delta Analysis

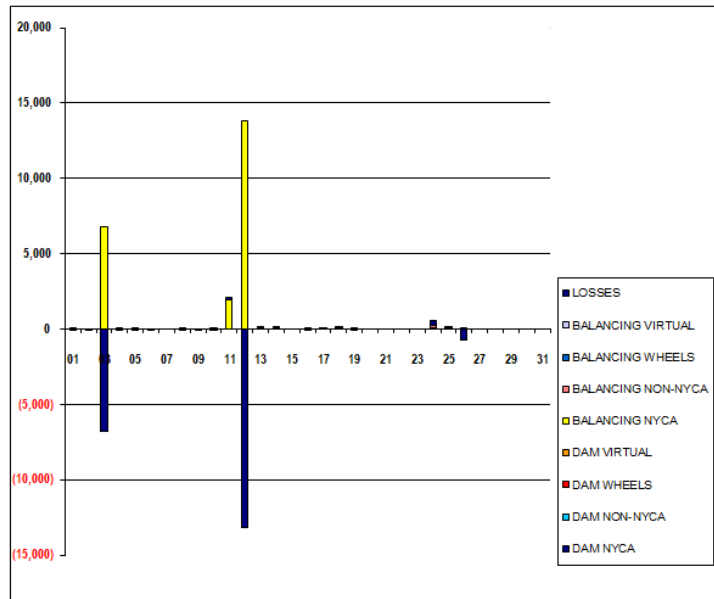
	MONDAY	TUESDAY	WEDNESDAY	THURSDAY	FRIDAY	SATURDAY	SUNDAY
	1	2	3	4	5	6	7
DAM NYCA	0	0	0	0	0	0	0
DAM NON-NYCA	0	0	0	0	0	0	0
DAM WHEELS	0	0	0	0	0	0	0
DAM VIRTUAL	0	0	0	0	0	0	0
BALANCING NYCA	(0)	(0)	0	(0)	15	(0)	0
BALANCING NON-NYCA	0	0	0	0	0	0	0
BALANCING WHEELS	0	0	0	0	0	0	0
BALANCING VIRTUAL	0	0	0	0	0	0	0
8	9	10	11	12	13	14	
DAM NYCA	0	0	0	0	0	0	0
DAM NON-NYCA	0	0	0	0	0	0	0
DAM WHEELS	0	0	0	0	0	0	0
DAM VIRTUAL	0	0	0	0	0	0	0
BALANCING NYCA	(0)	(0)	(0)	2,110	672	50	46
BALANCING NON-NYCA	0	0	0	0	0	0	0
BALANCING WHEELS	0	0	0	0	0	0	0
BALANCING VIRTUAL	0	0	0	0	0	0	0
15	16	17	18	19	20	21	
DAM NYCA	0	0	0	0	0	0	0
DAM NON-NYCA	0	0	0	0	0	0	0
DAM WHEELS	0	0	0	0	0	0	0
DAM VIRTUAL	0	0	0	0	0	0	0
BALANCING NYCA	0	(0)	58	46	(2)	0	0
BALANCING NON-NYCA	0	0	0	0	0	0	0
BALANCING WHEELS	0	0	0	0	0	0	0
BALANCING VIRTUAL	0	0	0	0	0	0	0
22	23	24	25	26	27	28	
DAM NYCA	0	0	0	0	0	0	0
DAM NON-NYCA	0	0	0	0	0	0	0
DAM WHEELS	0	0	0	0	0	0	0
DAM VIRTUAL	0	0	0	0	0	0	0
BALANCING NYCA	0	0	47	47	(741)	0	0
BALANCING NON-NYCA	0	0	525	0	0	0	0
BALANCING WHEELS	0	0	0	0	0	0	0
BALANCING VIRTUAL	0	0	0	0	0	0	0
29	30	31					
DAM NYCA	0	0	0				
DAM NON-NYCA	0	0	0				
DAM WHEELS	0	0	0				
DAM VIRTUAL	0	0	0				
BALANCING NYCA	0	0	0				
BALANCING NON-NYCA	0	0	0				
BALANCING WHEELS	0	0	0				
BALANCING VIRTUAL	0	0	0				



SETTLEMENTS REPORT
 June 2020 Settlement Adjustment
 July 8, 2020

Initial – Market Withdrawals Delta Analysis

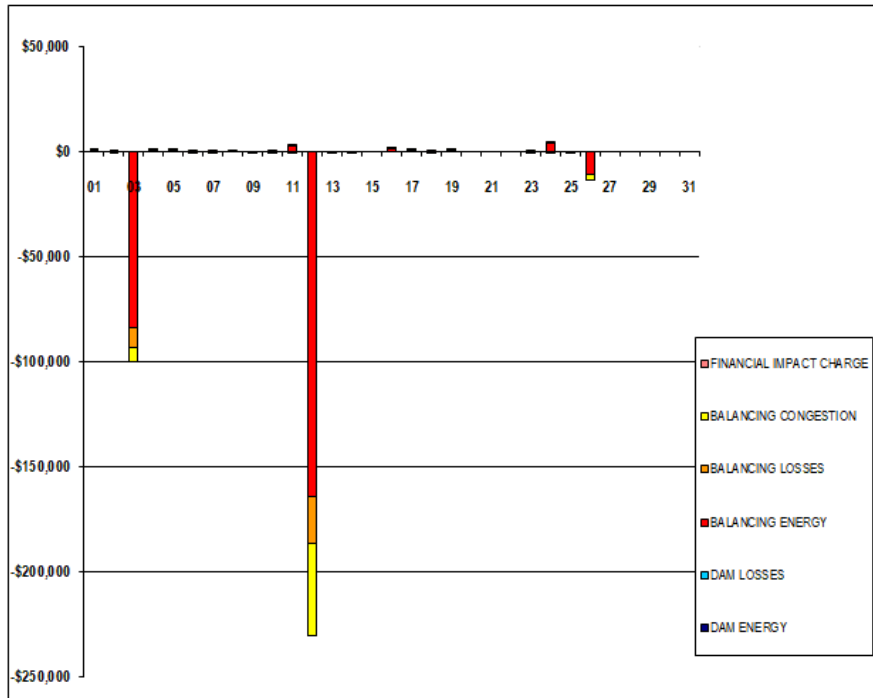
	MONDAY	TUESDAY	WEDNESDAY	THURSDAY	FRIDAY	SATURDAY	SUNDAY
	1	2	3	4	5	6	7
DAM NYCA	0	0	0	0	0	0	0
DAM NON-NYCA	0	0	0	0	0	0	0
DAM WHEELS	0	0	0	0	0	0	0
DAM VIRTUAL	0	0	0	0	0	0	0
BALANCING NYCA	(2)	0	6,774	2	(23)	0	0
BALANCING NON-NYCA	0	0	0	0	0	0	0
BALANCING WHEELS	0	0	0	0	0	0	0
BALANCING VIRTUAL	0	0	0	0	0	0	0
UFE/LOSSES	2	(0)	(6,774)	(2)	38	(0)	0
	8	9	10	11	12	13	14
DAM NYCA	0	0	0	0	0	0	0
DAM NON-NYCA	0	0	0	0	0	0	0
DAM WHEELS	0	0	0	0	0	0	0
DAM VIRTUAL	0	0	0	0	0	0	0
BALANCING NYCA	(0)	0	0	1,953	13,840	50	46
BALANCING NON-NYCA	0	0	0	0	0	0	0
BALANCING WHEELS	0	0	0	0	0	0	0
BALANCING VIRTUAL	0	0	0	0	0	0	0
UFE/LOSSES	0	(0)	(0)	157	(13,168)	0	0
	15	16	17	18	19	20	21
DAM NYCA	0	0	0	0	0	0	0
DAM NON-NYCA	0	0	0	0	0	0	0
DAM WHEELS	0	0	0	0	0	0	0
DAM VIRTUAL	0	0	0	0	0	0	0
BALANCING NYCA	0	(57)	30	37	(40)	0	0
BALANCING NON-NYCA	0	0	0	0	0	0	0
BALANCING WHEELS	0	0	0	0	0	0	0
BALANCING VIRTUAL	0	0	0	0	0	0	0
UFE/LOSSES	0	57	28	9	38	0	0
	22	23	24	25	26	27	28
DAM NYCA	0	0	0	0	0	0	0
DAM NON-NYCA	0	0	0	0	0	0	0
DAM WHEELS	0	0	0	0	0	0	0
DAM VIRTUAL	0	0	0	0	0	0	0
BALANCING NYCA	0	0	47	47	5	0	0
BALANCING NON-NYCA	0	0	195	0	0	0	0
BALANCING WHEELS	0	0	0	0	0	0	0
BALANCING VIRTUAL	0	0	0	0	0	0	0
UFE/LOSSES	0	0	330	0	(746)	0	0
	29	30	31				
DAM NYCA	0	0	0				
DAM NON-NYCA	0	0	0				
DAM WHEELS	0	0	0				
DAM VIRTUAL	0	0	0				
BALANCING NYCA	0	0	0				
BALANCING NON-NYCA	0	0	0				
BALANCING WHEELS	0	0	0				
BALANCING VIRTUAL	0	0	0				
UFE/LOSSES	0	0	0				



SETTLEMENTS REPORT
 June 2020 Settlement Adjustment
 July 8, 2020

Initial – Market Residuals Delta Analysis

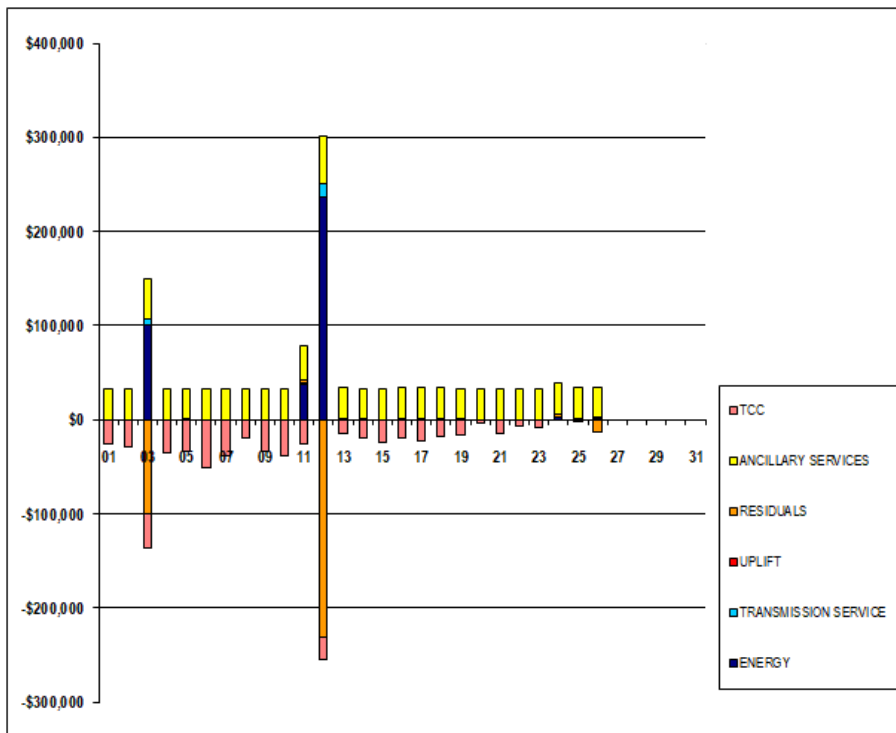
	MONDAY	TUESDAY	WEDNESDAY	THURSDAY	FRIDAY	SATURDAY	SUNDAY
	1	2	3	4	5	6	7
DAM ENERGY	(\$0.01)	\$0.00	\$0.00	\$0.01	\$0.01	\$0.00	\$0.00
DAM LOSSES	\$0.01	\$0.00	\$0.00	\$0.00	\$0.00	\$0.00	\$0.00
BALANCING ENERGY	\$10.73	\$0.06	(\$84,077.59)	\$9.96	\$538.87	(\$0.11)	\$0.09
BALANCING LOSSES	\$0.84	\$5.24	(\$9,386.37)	\$2.16	\$62.85	\$0.00	\$0.00
BALANCING CONGESTION	\$16.22	(\$0.13)	(\$7,163.67)	\$16.00	\$29.39	\$0.14	(\$0.12)
FINANCIAL IMPACT CHARGE	\$0.00	\$0.00	\$0.00	\$0.00	\$0.00	\$0.00	\$0.00
	8	9	10	11	12	13	14
DAM ENERGY	\$0.00	\$0.00	\$0.00	\$0.00	\$0.00	\$0.00	\$0.01
DAM LOSSES	\$0.00	\$0.00	\$0.00	\$0.00	\$0.00	\$0.00	\$0.00
BALANCING ENERGY	\$0.01	(\$0.09)	\$0.51	\$2,505.61	(\$164,708.39)	(\$0.01)	\$0.03
BALANCING LOSSES	\$0.01	\$0.01	(\$0.03)	\$64.82	(\$21,916.41)	(\$8.92)	(\$6.84)
BALANCING CONGESTION	\$0.19	(\$1.06)	(\$11.48)	(\$350.09)	(\$44,409.77)	(\$244.38)	(\$108.43)
FINANCIAL IMPACT CHARGE	\$0.00	\$0.00	\$0.00	\$0.00	\$0.00	\$0.00	\$0.00
	15	16	17	18	19	20	21
DAM ENERGY	\$0.00	\$0.00	\$0.01	(\$0.01)	\$0.00	\$0.00	\$0.00
DAM LOSSES	\$0.00	\$0.00	\$0.01	\$0.00	\$0.00	\$0.00	\$0.00
BALANCING ENERGY	\$0.01	\$782.76	\$445.06	\$100.55	\$522.07	\$0.00	\$0.00
BALANCING LOSSES	\$0.01	\$77.76	\$13.60	(\$3.19)	\$59.31	\$0.00	\$0.00
BALANCING CONGESTION	\$0.00	\$12.24	\$16.12	(\$10.74)	\$135.37	\$0.00	\$0.00
FINANCIAL IMPACT CHARGE	\$0.00	\$0.00	\$0.00	\$0.00	\$0.00	\$0.00	\$0.00
	22	23	24	25	26	27	28
DAM ENERGY	\$0.00	\$0.00	\$0.01	(\$0.01)	\$0.01	\$0.00	\$0.00
DAM LOSSES	\$0.00	\$0.00	\$0.00	\$0.00	\$0.01	\$0.00	\$0.00
BALANCING ENERGY	\$0.00	(\$31.77)	\$3,829.06	(\$0.05)	(\$11,159.54)	\$0.00	\$0.00
BALANCING LOSSES	\$0.00	(\$3.72)	\$402.21	(\$15.45)	(\$82.09)	\$0.00	\$0.00
BALANCING CONGESTION	\$0.00	\$22.16	(\$801.58)	(\$537.34)	(\$2,596.35)	\$0.00	\$0.00
FINANCIAL IMPACT CHARGE	\$0.00	\$0.00	\$0.00	\$0.00	\$0.00	\$0.00	\$0.00
	29	30	31				
DAM ENERGY	\$0.00	\$0.00	\$0.00				
DAM LOSSES	\$0.00	\$0.00	\$0.00				
BALANCING ENERGY	\$0.00	\$0.00	\$0.00				
BALANCING LOSSES	\$0.00	\$0.00	\$0.00				
BALANCING CONGESTION	\$0.00	\$0.00	\$0.00				
FINANCIAL IMPACT CHARGE	\$0.00	\$0.00	\$0.00				



SETTLEMENTS REPORT
 June 2020 Settlement Adjustment
 July 8, 2020

Initial – Market Costs Delta Analysis

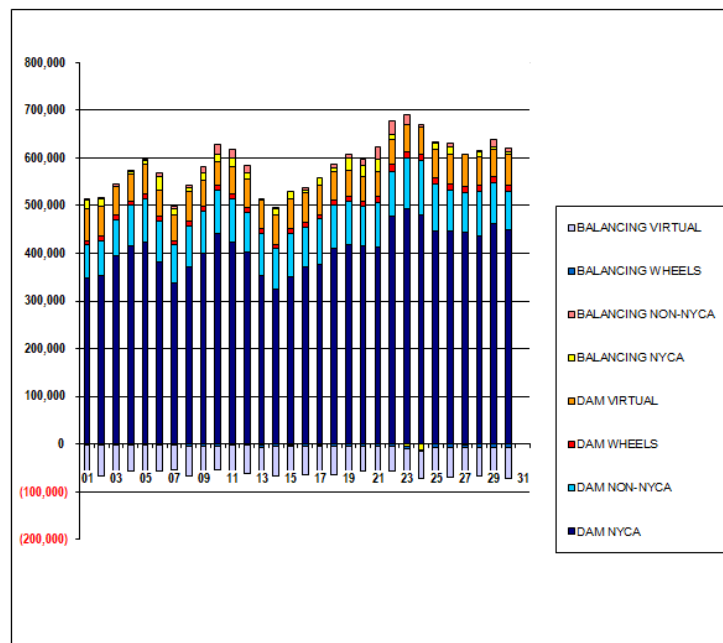
	MONDAY	TUESDAY	WEDNESDAY	THURSDAY	FRIDAY	SATURDAY	SUNDAY
	1	2	3	4	5	6	7
ENERGY	(\$27.67)	(\$5.23)	\$100,627.70	(\$28.46)	(\$326.64)	(\$0.67)	\$0.05
TRANSMISSION SERVICE	(\$2.05)	\$0.00	\$6,909.47	\$2.02	(\$23.71)	(\$0.01)	\$0.00
UPLIFT	\$0.00	(\$0.01)	(\$0.01)	\$0.01	(\$0.02)	\$0.01	\$0.00
RESIDUALS	\$27.79	\$5.17	(\$100,627.63)	\$28.13	\$631.12	\$0.03	(\$0.03)
ANCILLARY SERVICES	\$32,685.84	\$32,688.36	\$41,251.24	\$32,680.89	\$32,674.76	\$32,688.34	\$32,688.38
TCC	(\$26,244.69)	(\$29,339.24)	(\$36,610.66)	(\$36,021.96)	(\$32,780.37)	(\$50,583.03)	(\$38,583.10)
	8	9	10	11	12	13	14
ENERGY	(\$0.23)	\$0.88	\$11.01	\$37,693.35	\$236,396.13	\$644.40	\$410.07
TRANSMISSION SERVICE	(\$0.01)	(\$0.02)	\$0.04	\$1,991.73	\$14,117.10	\$51.44	\$47.37
UPLIFT	\$0.00	\$0.00	\$0.00	\$20.81	\$0.00	\$0.00	(\$0.01)
RESIDUALS	\$0.21	(\$1.14)	(\$11.00)	\$2,220.34	(\$231,034.57)	(\$253.31)	(\$115.23)
ANCILLARY SERVICES	\$32,688.36	\$32,688.36	\$32,688.42	\$35,752.14	\$50,409.47	\$32,767.52	\$32,761.26
TCC	(\$19,948.37)	(\$34,081.32)	(\$38,598.70)	(\$26,243.17)	(\$23,387.88)	(\$14,660.69)	(\$20,123.80)
	15	16	17	18	19	20	21
ENERGY	(\$0.11)	(\$872.87)	\$381.34	\$709.08	(\$748.51)	\$0.00	\$0.00
TRANSMISSION SERVICE	\$0.00	(\$58.43)	\$30.59	\$38.00	(\$40.80)	\$0.00	\$0.00
UPLIFT	\$0.01	\$0.04	(\$0.01)	\$0.03	(\$0.03)	\$0.00	\$0.00
RESIDUALS	\$0.02	\$872.76	\$474.80	\$86.61	\$716.75	\$0.00	\$0.00
ANCILLARY SERVICES	\$32,688.38	\$32,615.98	\$32,743.89	\$32,749.58	\$32,636.86	\$32,688.38	\$32,688.38
TCC	(\$24,669.05)	(\$18,017.26)	(\$22,276.43)	(\$18,628.16)	(\$15,128.88)	(\$4,310.50)	(\$15,285.77)
	22	23	24	25	26	27	28
ENERGY	\$0.00	\$13.33	\$2,569.30	\$1,117.20	\$1,496.43	\$0.00	\$0.00
TRANSMISSION SERVICE	\$0.00	\$0.00	\$353.95	\$47.65	\$488.99	\$0.00	\$0.00
UPLIFT	\$0.00	(\$0.01)	\$0.00	\$0.00	(\$109.53)	\$0.00	\$0.00
RESIDUALS	\$0.00	(\$13.33)	\$3,429.70	(\$552.85)	(\$13,837.96)	\$0.00	\$0.00
ANCILLARY SERVICES	\$32,688.38	\$32,688.39	\$33,333.48	\$32,761.69	\$32,741.91	\$0.00	\$0.00
TCC	(\$7,089.92)	(\$7,861.40)	\$0.00	\$0.00	\$0.00	\$0.00	\$0.00
	29	30	31				
ENERGY	\$0.00	\$0.00	\$0.00				
TRANSMISSION SERVICE	\$0.00	\$0.00	\$0.00				
UPLIFT	\$0.00	\$0.00	\$0.00				
RESIDUALS	\$0.00	\$0.00	\$0.00				
ANCILLARY SERVICES	\$0.00	\$0.00	\$0.00				
TCC	\$0.00	\$0.00	\$0.00				



SETTLEMENTS REPORT
 June 2020 Settlement Adjustment
 July 8, 2020

Weekly Settlement – Market Supply Analysis

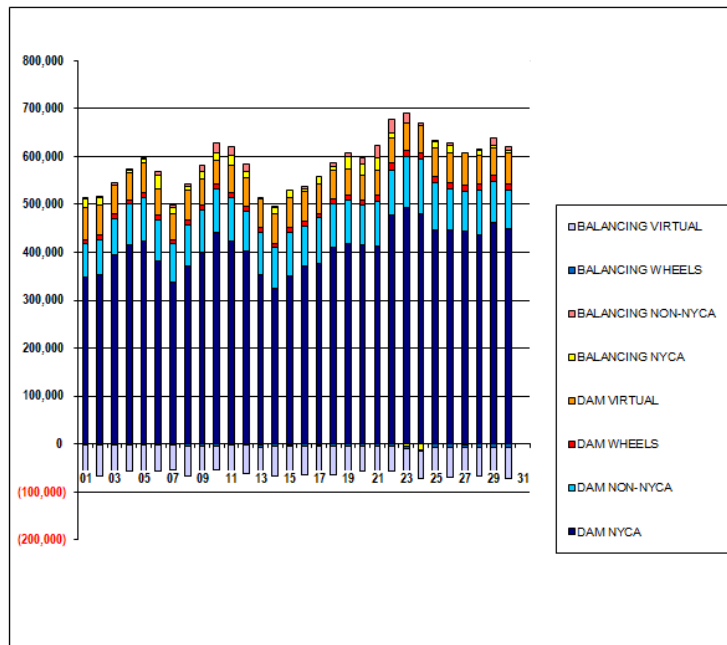
	MONDAY	TUESDAY	WEDNESDAY	THURSDAY	FRIDAY	SATURDAY	SUNDAY
	1	2	3	4	5	6	7
DAM NYCA	347,820	352,989	395,408	414,849	423,378	381,268	338,419
DAM NON-NYCA	70,558	72,070	75,542	85,819	89,976	87,161	80,134
DAM WHEELS	8,460	10,309	9,385	8,559	10,033	9,101	8,533
DAM VIRTUAL	67,097	62,813	59,954	55,785	64,346	54,392	53,536
BALANCING NYCA	17,855	16,017	1	5,764	5,802	29,115	12,969
BALANCING NON-NYCA	1,248	1,330	4,114	3,205	3,852	8,387	6,498
BALANCING WHEELS	(1,260)	(3,109)	(3,056)	(2,166)	(3,433)	(1,901)	(1,788)
BALANCING VIRTUAL	(67,097)	(62,813)	(59,954)	(55,785)	(64,346)	(54,392)	(53,536)
	8	9	10	11	12	13	14
DAM NYCA	370,715	400,075	440,196	423,496	403,217	351,966	325,109
DAM NON-NYCA	86,440	86,933	92,557	91,149	83,350	88,241	83,984
DAM WHEELS	10,582	12,136	10,434	9,311	9,498	10,756	9,480
DAM VIRTUAL	60,783	53,867	49,573	58,537	58,711	59,965	61,046
BALANCING NYCA	8,601	15,639	15,048	18,094	13,373	1,712	12,889
BALANCING NON-NYCA	5,462	11,855	21,036	17,951	14,818	(1,315)	848
BALANCING WHEELS	(5,344)	(5,179)	(4,454)	(3,311)	(3,348)	(5,993)	(4,830)
BALANCING VIRTUAL	(60,783)	(53,867)	(49,573)	(58,537)	(58,711)	(59,965)	(61,046)
	15	16	17	18	19	20	21
DAM NYCA	350,532	370,641	377,222	410,608	417,554	415,648	413,844
DAM NON-NYCA	91,104	83,878	95,337	90,279	91,818	82,379	92,319
DAM WHEELS	9,189	9,995	7,845	10,165	11,178	12,084	12,611
DAM VIRTUAL	64,300	61,548	61,171	59,351	53,862	50,543	52,026
BALANCING NYCA	14,985	7,108	15,305	9,489	25,828	22,845	26,496
BALANCING NON-NYCA	(1,577)	4,770	(2,159)	8,068	6,878	14,332	25,121
BALANCING WHEELS	(3,274)	(4,149)	(2,935)	(4,782)	(5,178)	(5,508)	(5,411)
BALANCING VIRTUAL	(64,300)	(61,548)	(61,171)	(59,351)	(53,862)	(50,543)	(52,026)
	22	23	24	25	26	27	28
DAM NYCA	476,859	493,992	480,340	446,341	446,186	444,625	437,114
DAM NON-NYCA	95,492	106,366	115,265	97,937	85,618	83,076	92,455
DAM WHEELS	13,218	12,537	10,660	13,557	14,238	12,083	13,414
DAM VIRTUAL	51,746	57,208	58,554	61,039	61,976	66,477	59,819
BALANCING NYCA	11,318	(4,828)	(11,530)	12,657	14,671	(1,068)	10,554
BALANCING NON-NYCA	27,806	20,687	5,951	2,360	7,435	(347)	2,592
BALANCING WHEELS	(6,018)	(5,757)	(3,460)	(7,130)	(7,788)	(6,083)	(7,414)
BALANCING VIRTUAL	(51,746)	(57,208)	(58,554)	(61,039)	(61,976)	(66,477)	(59,819)
	29	30					
DAM NYCA	462,380	448,193					
DAM NON-NYCA	85,743	80,781					
DAM WHEELS	13,156	13,236					
DAM VIRTUAL	56,818	64,192					
BALANCING NYCA	5,421	6,174					
BALANCING NON-NYCA	14,387	7,961					
BALANCING WHEELS	(7,236)	(7,094)					
BALANCING VIRTUAL	(56,818)	(64,192)					



SETTLEMENTS REPORT
 June 2020 Settlement Adjustment
 July 8, 2020

Initial Settlement Adjustment – Market Supply Analysis

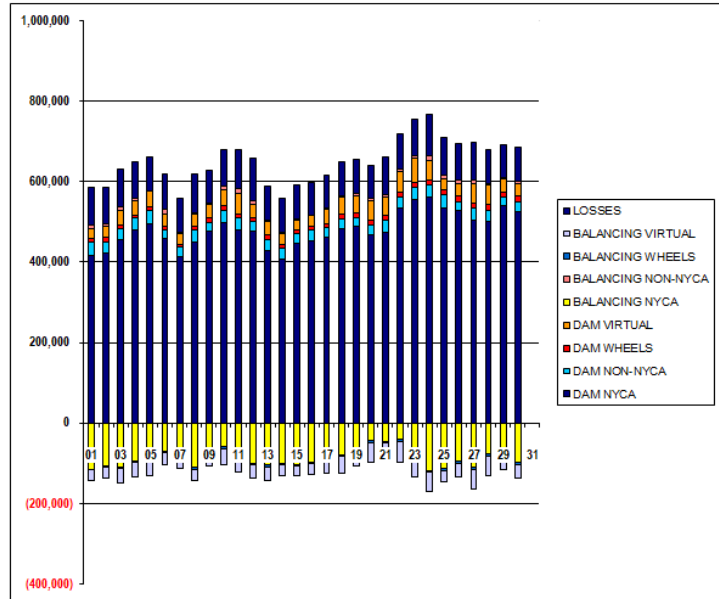
	MONDAY	TUESDAY	WEDNESDAY	THURSDAY	FRIDAY	SATURDAY	SUNDAY
	1	2	3	4	5	6	7
DAM NYCA	347,820	352,989	395,408	414,849	423,378	381,268	338,419
DAM NON-NYCA	70,558	72,070	75,542	85,819	89,976	87,161	80,134
DAM WHEELS	8,460	10,309	9,385	8,559	10,033	9,101	8,533
DAM VIRTUAL	67,097	62,813	59,954	55,785	64,346	54,392	53,536
BALANCING NYCA	17,855	16,017	1	5,764	5,817	25,115	12,969
BALANCING NON-NYCA	1,248	1,330	4,114	3,205	3,852	8,387	6,498
BALANCING WHEELS	(1,280)	(3,109)	(3,056)	(2,166)	(3,433)	(1,901)	(1,788)
BALANCING VIRTUAL	(67,097)	(62,813)	(59,954)	(55,785)	(64,346)	(54,392)	(53,536)
	8	9	10	11	12	13	14
DAM NYCA	370,715	400,075	440,196	423,496	403,217	351,966	325,109
DAM NON-NYCA	86,440	86,933	92,557	91,149	83,350	86,241	83,984
DAM WHEELS	10,682	12,136	10,434	9,311	9,498	10,756	9,480
DAM VIRTUAL	60,763	53,867	49,573	58,537	58,711	59,965	61,046
BALANCING NYCA	8,601	15,639	15,049	20,204	14,045	1,762	12,935
BALANCING NON-NYCA	5,462	11,855	21,036	17,951	14,818	(1,315)	648
BALANCING WHEELS	(5,344)	(5,179)	(4,454)	(3,311)	(3,348)	(5,993)	(4,830)
BALANCING VIRTUAL	(60,763)	(53,867)	(49,573)	(58,537)	(58,711)	(59,965)	(61,046)
	15	16	17	18	19	20	21
DAM NYCA	350,532	370,641	377,222	410,608	417,554	415,648	413,844
DAM NON-NYCA	91,104	83,878	95,337	90,279	91,818	82,379	92,919
DAM WHEELS	9,189	9,995	7,845	10,165	11,178	12,084	12,611
DAM VIRTUAL	64,300	61,548	61,171	59,351	53,862	50,543	52,026
BALANCING NYCA	14,985	7,108	15,963	9,535	25,826	22,845	26,496
BALANCING NON-NYCA	(1,677)	4,770	(2,156)	8,068	6,878	14,332	25,121
BALANCING WHEELS	(3,274)	(4,149)	(2,835)	(4,782)	(5,178)	(5,508)	(5,411)
BALANCING VIRTUAL	(64,300)	(61,548)	(61,171)	(59,351)	(53,862)	(50,543)	(52,026)
	22	23	24	25	26	27	28
DAM NYCA	476,859	493,992	480,340	446,341	446,186	444,625	437,114
DAM NON-NYCA	95,492	106,366	115,265	97,937	85,618	83,076	92,455
DAM WHEELS	13,218	12,537	10,660	13,557	14,238	12,083	13,414
DAM VIRTUAL	51,746	57,208	58,554	61,039	61,976	66,477	59,819
BALANCING NYCA	11,318	(4,828)	(11,483)	12,704	13,930	(1,068)	10,554
BALANCING NON-NYCA	27,806	20,687	6,176	2,360	7,435	(347)	2,592
BALANCING WHEELS	(6,018)	(5,757)	(3,460)	(7,130)	(7,788)	(6,083)	(7,414)
BALANCING VIRTUAL	(51,746)	(57,208)	(58,554)	(61,039)	(61,976)	(66,477)	(59,819)
	29	30					
DAM NYCA	462,380	448,193					
DAM NON-NYCA	85,743	80,781					
DAM WHEELS	13,156	13,236					
DAM VIRTUAL	56,818	64,192					
BALANCING NYCA	5,421	6,174					
BALANCING NON-NYCA	14,387	7,961					
BALANCING WHEELS	(7,236)	(7,094)					
BALANCING VIRTUAL	(56,818)	(64,192)					



SETTLEMENTS REPORT
 June 2020 Settlement Adjustment
 July 8, 2020

Weekly Settlement – Market Withdrawals Analysis

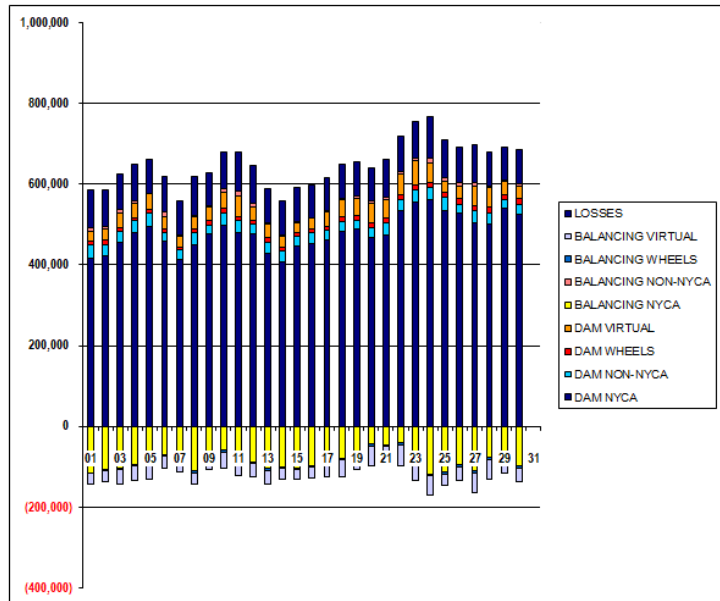
	MONDAY	TUESDAY	WEDNESDAY	THURSDAY	FRIDAY	SATURDAY	SUNDAY
	1	2	3	4	5	6	7
DAM NYCA	416,617	423,661	455,338	480,484	495,955	459,532	413,180
DAM NON-NYCA	33,639	27,158	27,713	28,434	32,034	19,846	23,334
DAM WHEELS	8,480	10,309	9,385	8,559	10,033	9,101	8,533
DAM VIRTUAL	25,792	27,689	37,038	35,941	37,963	31,232	25,016
BALANCING NYCA	(115,204)	(105,803)	(109,416)	(95,296)	(91,108)	(71,882)	(87,003)
BALANCING NON-NYCA	7,516	7,453	6,981	6,395	1,003	10,715	4,605
BALANCING WHEELS	(1,260)	(3,109)	(3,056)	(2,166)	(3,433)	(1,901)	(1,788)
BALANCING VIRTUAL	(25,792)	(27,689)	(37,038)	(35,941)	(37,963)	(31,232)	(25,016)
UFELOSSES	94,913	89,938	94,448	89,619	85,123	87,720	83,305
	8	9	10	11	12	13	14
DAM NYCA	448,746	476,066	499,167	481,014	476,717	429,033	406,252
DAM NON-NYCA	29,863	21,964	29,652	28,807	23,168	27,453	27,302
DAM WHEELS	10,682	12,156	10,434	9,311	9,498	10,756	9,480
DAM VIRTUAL	26,737	31,951	41,936	50,808	33,370	33,252	26,658
BALANCING NYCA	(109,507)	(70,069)	(58,736)	(69,199)	(101,317)	(103,517)	(100,353)
BALANCING NON-NYCA	4,988	4,627	6,657	11,679	10,566	3,246	4,839
BALANCING WHEELS	(5,344)	(5,179)	(4,454)	(3,311)	(3,348)	(5,993)	(4,830)
BALANCING VIRTUAL	(28,737)	(31,951)	(41,936)	(50,808)	(33,370)	(33,252)	(26,658)
UFELOSSES	97,128	81,913	92,096	98,390	105,625	84,389	84,589
	15	16	17	18	19	20	21
DAM NYCA	446,679	453,024	460,526	484,280	488,702	467,786	472,888
DAM NON-NYCA	25,076	27,361	26,413	23,806	22,934	23,005	30,042
DAM WHEELS	9,189	9,995	7,845	10,165	11,178	12,084	12,511
DAM VIRTUAL	24,424	25,459	36,911	42,325	40,670	48,597	45,391
BALANCING NYCA	(103,009)	(97,069)	(85,718)	(78,358)	(61,912)	(44,413)	(45,061)
BALANCING NON-NYCA	2,997	291	1,579	4,096	7,279	5,820	7,189
BALANCING WHEELS	(3,274)	(4,149)	(2,935)	(4,782)	(5,178)	(5,508)	(5,411)
BALANCING VIRTUAL	(24,424)	(25,459)	(36,911)	(42,325)	(40,670)	(48,597)	(45,391)
UFELOSSES	83,201	82,788	82,908	84,619	85,075	83,006	92,723
	22	23	24	25	26	27	28
DAM NYCA	535,128	556,057	562,287	535,677	528,433	504,664	502,639
DAM NON-NYCA	25,203	28,880	30,366	31,403	21,173	28,764	26,517
DAM WHEELS	13,216	12,537	10,960	13,557	14,238	12,083	13,414
DAM VIRTUAL	52,829	59,807	48,111	25,686	31,722	48,200	48,732
BALANCING NYCA	(40,568)	(68,235)	(117,632)	(112,076)	(93,973)	(110,180)	(75,475)
BALANCING NON-NYCA	4,232	7,002	13,146	10,458	9,511	9,475	3,261
BALANCING WHEELS	(6,018)	(5,757)	(3,480)	(7,130)	(7,788)	(6,083)	(7,414)
BALANCING VIRTUAL	(52,829)	(59,807)	(48,111)	(25,686)	(31,722)	(48,200)	(48,732)
UFELOSSES	87,481	92,532	101,558	93,832	88,766	93,563	85,773
	29	30					
DAM NYCA	539,827	526,096					
DAM NON-NYCA	21,964	24,474					
DAM WHEELS	13,156	13,236					
DAM VIRTUAL	31,449	32,162					
BALANCING NYCA	(78,464)	(96,960)					
BALANCING NON-NYCA	2,709	4,792					
BALANCING WHEELS	(7,236)	(7,094)					
BALANCING VIRTUAL	(31,449)	(32,162)					
UFELOSSES	81,895	84,707					



SETTLEMENTS REPORT
 June 2020 Settlement Adjustment
 July 8, 2020

Initial Settlement Adjustment – Market Withdrawals Analysis

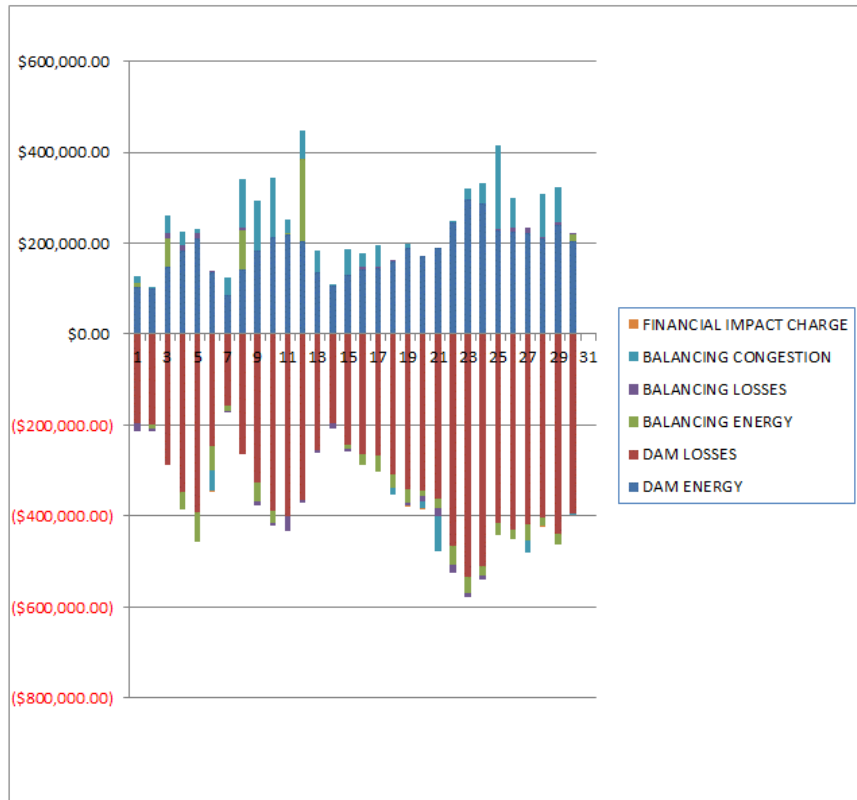
	MONDAY	TUESDAY	WEDNESDAY	THURSDAY	FRIDAY	SATURDAY	SUNDAY
	1	2	3	4	5	6	7
DAM NYCA	416,617	423,661	455,338	480,484	495,955	459,532	413,180
DAM NON-NYCA	33,639	27,158	27,713	28,434	32,034	19,846	23,334
DAM WHEELS	8,460	10,309	9,385	8,559	10,033	9,101	8,533
DAM VIRTUAL	25,792	27,689	37,038	35,941	37,963	31,232	25,016
BALANCING NYCA	(115,206)	(105,803)	(102,642)	(95,294)	(91,131)	(71,882)	(87,003)
BALANCING NON-NYCA	7,516	7,453	6,981	6,395	1,003	10,715	4,605
BALANCING WHEELS	(1,260)	(3,109)	(3,056)	(2,166)	(3,433)	(1,901)	(1,788)
BALANCING VIRTUAL	(25,792)	(27,689)	(37,038)	(35,941)	(37,963)	(31,232)	(25,016)
UFE/LOSSES	94,915	89,938	87,674	89,617	85,162	87,720	83,305
	8	9	10	11	12	13	14
DAM NYCA	448,746	476,066	499,167	481,014	476,717	429,033	406,252
DAM NON-NYCA	29,863	21,964	29,652	28,807	23,168	27,453	27,302
DAM WHEELS	10,682	12,136	10,434	9,311	9,498	10,756	9,480
DAM VIRTUAL	28,737	31,951	41,936	50,808	33,370	33,252	26,658
BALANCING NYCA	(109,507)	(70,069)	(58,735)	(67,247)	(87,477)	(103,466)	(100,306)
BALANCING NON-NYCA	4,988	4,627	6,667	11,679	10,556	3,246	4,839
BALANCING WHEELS	(5,344)	(5,179)	(4,454)	(3,311)	(3,348)	(5,993)	(4,830)
BALANCING VIRTUAL	(28,737)	(31,951)	(41,936)	(50,808)	(33,370)	(33,252)	(26,658)
UFE/LOSSES	97,128	81,913	92,096	98,547	92,457	84,389	84,589
	15	16	17	18	19	20	21
DAM NYCA	448,679	453,024	460,526	484,280	488,702	467,786	472,888
DAM NON-NYCA	25,076	27,361	26,413	23,806	22,934	23,005	30,042
DAM WHEELS	9,189	9,995	7,845	10,165	11,178	12,084	12,611
DAM VIRTUAL	24,424	25,459	36,911	42,325	40,670	48,597	45,391
BALANCING NYCA	(103,009)	(97,126)	(85,688)	(78,321)	(61,952)	(44,413)	(45,061)
BALANCING NON-NYCA	2,997	291	1,579	4,096	7,279	5,620	7,169
BALANCING WHEELS	(3,274)	(4,149)	(2,935)	(4,782)	(5,178)	(5,508)	(5,411)
BALANCING VIRTUAL	(24,424)	(25,459)	(36,911)	(42,325)	(40,670)	(48,597)	(45,391)
UFE/LOSSES	63,201	82,846	82,936	84,628	85,113	83,006	92,723
	22	23	24	25	26	27	28
DAM NYCA	535,128	556,057	562,287	535,677	528,433	504,664	502,639
DAM NON-NYCA	25,203	28,860	30,366	31,403	21,173	28,764	26,517
DAM WHEELS	13,218	12,537	10,660	13,557	14,238	12,083	13,414
DAM VIRTUAL	52,829	59,807	48,111	25,686	31,722	48,200	48,732
BALANCING NYCA	(40,568)	(68,235)	(117,585)	(112,029)	(83,968)	(110,180)	(75,475)
BALANCING NON-NYCA	4,232	7,002	13,341	10,458	9,511	9,475	3,261
BALANCING WHEELS	(6,018)	(5,757)	(3,460)	(7,130)	(7,788)	(6,083)	(7,414)
BALANCING VIRTUAL	(52,829)	(59,807)	(48,111)	(25,686)	(31,722)	(48,200)	(48,732)
UFE/LOSSES	67,481	92,532	101,868	93,632	88,020	93,563	85,773
	29	30					
DAM NYCA	539,827	526,096					
DAM NON-NYCA	21,964	24,474					
DAM WHEELS	13,156	13,236					
DAM VIRTUAL	31,449	32,162					
BALANCING NYCA	(78,464)	(96,960)					
BALANCING NON-NYCA	2,709	4,792					
BALANCING WHEELS	(7,236)	(7,094)					
BALANCING VIRTUAL	(31,449)	(32,162)					
UFE/LOSSES	61,895	64,707					



SETTLEMENTS REPORT
 June 2020 Settlement Adjustment
 July 8, 2020

Weekly Settlement – Market Residuals Analysis

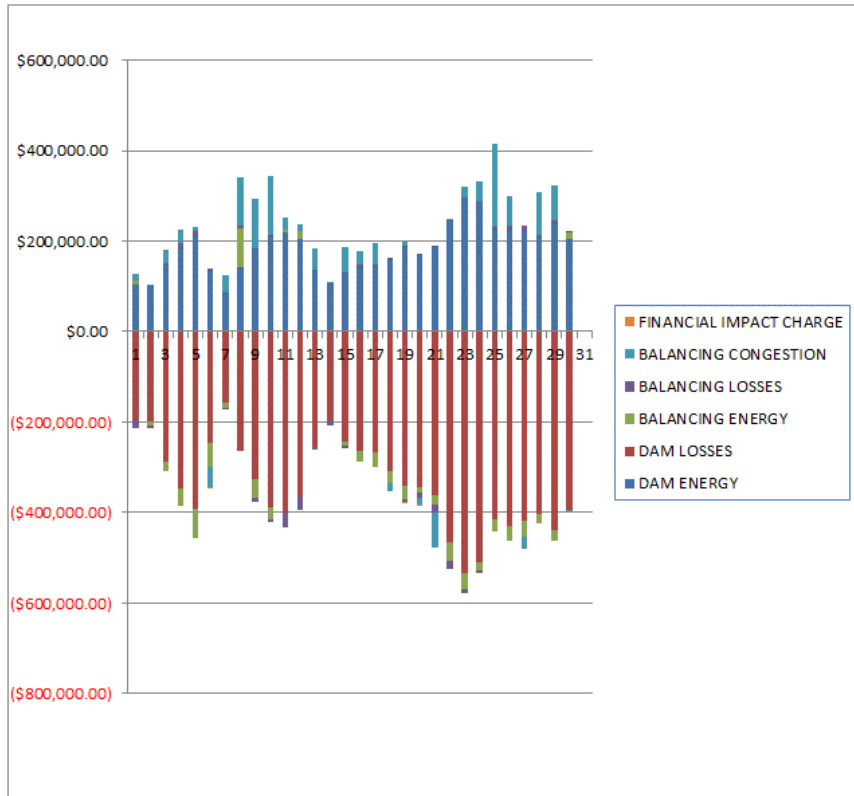
	MONDAY	TUESDAY	WEDNESDAY	THURSDAY	FRIDAY	SATURDAY	SUNDAY
	1	2	3	4	5	6	7
DAM ENERGY	\$102,987.27	\$101,877.20	\$148,930.13	\$184,467.92	\$211,234.66	\$135,137.56	\$84,525.16
DAM LOSSES	(\$196,116.64)	(\$198,680.78)	(\$288,156.00)	(\$345,347.16)	(\$391,946.06)	(\$244,553.61)	(\$157,015.63)
BALANCING ENERGY	\$9,352.14	(\$9,234.48)	\$62,707.36	(\$38,919.76)	(\$64,425.74)	(\$55,312.28)	(\$12,301.71)
BALANCING LOSSES	(\$18,331.39)	(\$5,222.98)	\$11,254.91	\$11,958.97	\$10,594.82	\$2,541.58	(\$175.41)
BALANCING CONGESTION	\$15,476.66	\$360.61	\$37,093.45	\$30,001.27	\$10,523.53	(\$42,710.09)	\$40,516.40
FINANCIAL IMPACT CHARGE	\$0.00	\$0.00	\$0.00	\$0.00	\$0.00	(\$66.29)	\$0.00
	8	9	10	11	12	13	14
DAM ENERGY	\$142,361.52	\$182,622.46	\$212,260.58	\$220,272.81	\$203,703.57	\$135,962.27	\$105,854.42
DAM LOSSES	(\$265,199.55)	(\$326,985.48)	(\$389,661.32)	(\$399,215.32)	(\$364,047.00)	(\$253,721.90)	(\$195,075.80)
BALANCING ENERGY	\$84,875.36	(\$40,309.41)	(\$24,374.25)	\$1,594.32	\$181,848.63	(\$1,584.19)	\$1,119.77
BALANCING LOSSES	\$7,254.46	(\$10,024.66)	(\$7,164.41)	(\$33,596.75)	(\$7,877.26)	(\$6,326.06)	(\$10,993.46)
BALANCING CONGESTION	\$105,411.41	\$109,604.29	\$130,059.58	\$29,082.49	\$61,011.64	\$46,746.15	\$822.96
FINANCIAL IMPACT CHARGE	\$0.00	\$0.00	\$0.00	\$0.00	\$0.00	\$0.00	\$0.00
	15	16	17	18	19	20	21
DAM ENERGY	\$130,369.40	\$141,600.65	\$144,656.95	\$159,778.24	\$188,284.23	\$171,940.44	\$188,505.97
DAM LOSSES	(\$243,369.53)	(\$264,791.28)	(\$265,799.82)	(\$308,068.70)	(\$340,433.93)	(\$342,352.18)	(\$361,762.78)
BALANCING ENERGY	(\$7,594.17)	(\$23,602.21)	(\$35,307.40)	(\$28,362.63)	(\$31,321.03)	(\$14,756.92)	(\$19,809.24)
BALANCING LOSSES	(\$7,935.44)	\$6,895.47	\$4,595.83	\$627.01	(\$4,551.07)	(\$9,445.03)	(\$18,381.23)
BALANCING CONGESTION	\$55,331.23	\$28,780.05	\$45,449.67	(\$16,088.84)	\$10,739.74	(\$16,273.37)	(\$78,281.61)
FINANCIAL IMPACT CHARGE	\$0.00	\$0.00	\$0.00	\$0.00	(\$226.34)	(\$647.18)	\$0.00
	22	23	24	25	26	27	28
DAM ENERGY	\$247,102.64	\$296,647.66	\$287,067.62	\$227,979.66	\$224,732.58	\$222,757.09	\$209,432.11
DAM LOSSES	(\$466,792.76)	(\$533,481.65)	(\$510,775.11)	(\$414,609.19)	(\$430,880.08)	(\$418,202.75)	(\$403,502.88)
BALANCING ENERGY	(\$39,594.35)	(\$35,231.80)	(\$19,960.14)	(\$27,309.98)	(\$20,950.60)	(\$36,243.10)	(\$15,979.07)
BALANCING LOSSES	(\$18,160.02)	(\$9,189.26)	(\$7,921.96)	\$1,693.93	\$9,103.76	\$12,181.86	\$2,860.88
BALANCING CONGESTION	\$2,255.94	\$23,162.83	\$46,028.45	\$186,513.59	\$66,888.09	(\$24,933.95)	\$97,218.17
FINANCIAL IMPACT CHARGE	\$0.00	\$0.00	\$0.00	\$0.00	\$0.00	\$0.00	(\$50.22)
	29	30					
DAM ENERGY	\$240,955.17	\$203,621.96					
DAM LOSSES	(\$438,312.55)	(\$394,600.42)					
BALANCING ENERGY	(\$22,751.22)	\$14,279.93					
BALANCING LOSSES	\$3,836.95	\$5,524.18					
BALANCING CONGESTION	\$78,278.91	(\$1,373.79)					
FINANCIAL IMPACT CHARGE	\$0.00	\$0.00					



SETTLEMENTS REPORT
 June 2020 Settlement Adjustment
 July 8, 2020

Initial Settlement Adjustment – Market Residuals Analysis

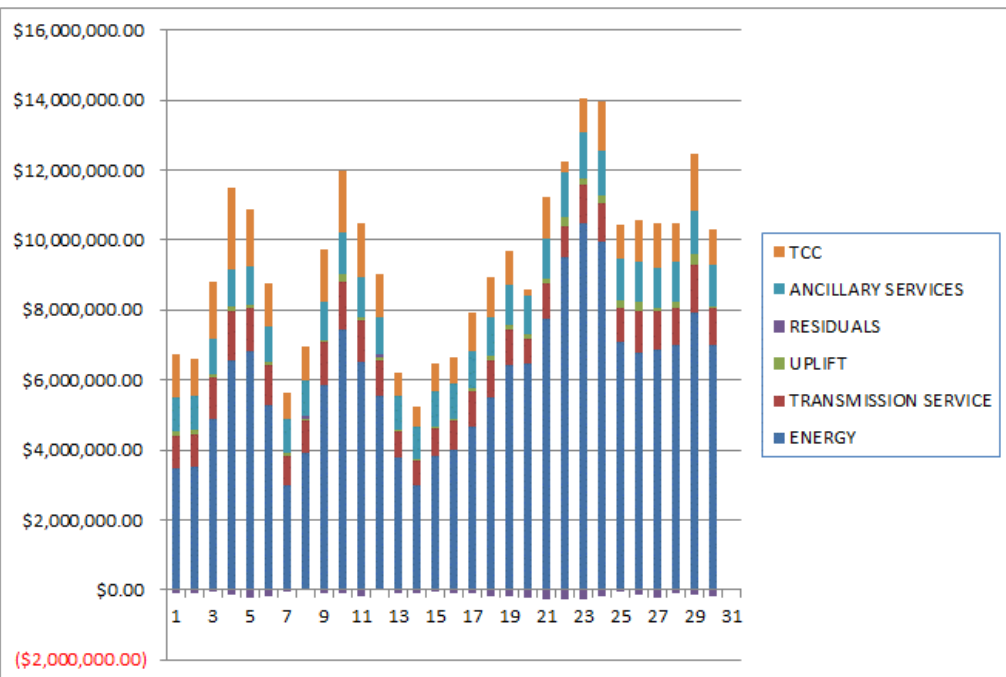
	MONDAY	TUESDAY	WEDNESDAY	THURSDAY	FRIDAY	SATURDAY	SUNDAY
	1	2	3	4	5	6	7
DAM ENERGY	\$102,987.26	\$101,877.20	\$148,930.13	\$184,467.93	\$211,234.67	\$135,137.56	\$84,525.16
DAM LOSSES	(\$196,116.63)	(\$198,680.78)	(\$288,156.00)	(\$345,347.16)	(\$391,946.06)	(\$244,553.61)	(\$157,015.63)
BALANCING ENERGY	\$9,362.87	(\$9,234.42)	(\$21,370.23)	(\$38,909.80)	(\$63,886.87)	(\$55,312.39)	(\$12,301.62)
BALANCING LOSSES	(\$18,330.55)	(\$5,217.74)	\$1,868.54	\$11,961.13	\$10,657.67	\$2,541.58	(\$175.41)
BALANCING CONGESTION	\$15,492.88	\$360.48	\$29,929.78	\$30,017.27	\$10,552.92	(\$42,709.95)	\$40,516.28
FINANCIAL IMPACT CHARGE	\$0.00	\$0.00	\$0.00	\$0.00	\$0.00	(\$86.29)	\$0.00
	8	9	10	11	12	13	14
DAM ENERGY	\$142,361.52	\$182,622.46	\$212,260.58	\$220,272.81	\$203,703.57	\$135,962.27	\$105,854.43
DAM LOSSES	(\$265,199.55)	(\$326,985.48)	(\$389,661.32)	(\$399,215.32)	(\$364,047.00)	(\$253,721.90)	(\$195,075.80)
BALANCING ENERGY	\$84,875.37	(\$40,309.50)	(\$24,373.74)	\$4,099.93	\$17,140.24	(\$1,584.20)	\$1,119.80
BALANCING LOSSES	\$7,254.47	(\$10,024.65)	(\$7,164.44)	(\$33,531.93)	(\$29,793.67)	(\$6,334.98)	(\$11,000.30)
BALANCING CONGESTION	\$105,411.60	\$109,603.23	\$130,048.10	\$28,732.40	\$16,601.87	\$46,501.77	\$714.53
FINANCIAL IMPACT CHARGE	\$0.00	\$0.00	\$0.00	\$0.00	\$0.00	\$0.00	\$0.00
	15	16	17	18	19	20	21
DAM ENERGY	\$130,369.40	\$141,600.65	\$144,656.96	\$159,778.23	\$188,284.23	\$171,940.44	\$188,505.97
DAM LOSSES	(\$243,369.53)	(\$264,791.28)	(\$265,799.81)	(\$308,068.70)	(\$340,433.93)	(\$342,352.18)	(\$361,762.78)
BALANCING ENERGY	(\$7,594.16)	(\$23,019.45)	(\$34,862.34)	(\$28,282.08)	(\$30,798.96)	(\$14,756.92)	(\$19,809.24)
BALANCING LOSSES	(\$7,935.43)	\$6,973.23	\$4,609.43	\$623.82	(\$4,491.76)	(\$9,445.03)	(\$18,381.23)
BALANCING CONGESTION	\$55,331.23	\$28,792.29	\$45,465.79	(\$16,099.58)	\$10,875.11	(\$16,273.37)	(\$78,281.61)
FINANCIAL IMPACT CHARGE	\$0.00	\$0.00	\$0.00	\$0.00	(\$226.34)	(\$647.18)	\$0.00
	22	23	24	25	26	27	28
DAM ENERGY	\$247,102.64	\$296,647.66	\$287,067.63	\$227,979.65	\$224,732.59	\$222,757.09	\$209,432.11
DAM LOSSES	(\$466,792.76)	(\$533,481.65)	(\$510,775.11)	(\$414,609.19)	(\$430,880.07)	(\$418,202.75)	(\$403,502.88)
BALANCING ENERGY	(\$39,594.35)	(\$35,263.57)	(\$16,131.08)	(\$27,310.03)	(\$32,110.14)	(\$36,243.10)	(\$15,979.07)
BALANCING LOSSES	(\$18,160.02)	(\$9,192.98)	(\$7,519.75)	\$1,678.48	\$9,021.67	\$12,181.86	\$2,860.88
BALANCING CONGESTION	\$2,255.94	\$23,184.99	\$45,226.87	\$185,976.25	\$64,291.74	(\$24,933.95)	\$97,218.17
FINANCIAL IMPACT CHARGE	\$0.00	\$0.00	\$0.00	\$0.00	\$0.00	\$0.00	(\$50.22)
	29	30					
DAM ENERGY	\$240,955.17	\$203,621.96					
DAM LOSSES	(\$438,312.55)	(\$394,600.42)					
BALANCING ENERGY	(\$22,751.22)	\$14,279.93					
BALANCING LOSSES	\$3,836.95	\$5,524.18					
BALANCING CONGESTION	\$78,278.91	(\$1,373.79)					
FINANCIAL IMPACT CHARGE	\$0.00	\$0.00					



SETTLEMENTS REPORT
 June 2020 Settlement Adjustment
 July 8, 2020

Weekly Settlement – Market Costs Analysis

	MONDAY	TUESDAY	WEDNESDAY	THURSDAY	FRIDAY	SATURDAY	SUNDAY
	1	2	3	4	5	6	7
ENERGY	\$3,476,967.07	\$3,514,720.24	\$4,900,714.16	\$6,541,426.68	\$6,819,257.55	\$5,287,645.52	\$3,001,830.79
TRANSMISSION SERVICE	\$938,955.34	\$942,546.46	\$1,184,752.71	\$1,430,259.01	\$1,248,637.55	\$1,131,491.22	\$843,948.35
UPLIFT	\$126,736.24	\$102,997.91	\$90,084.95	\$109,629.80	\$58,554.05	\$74,889.46	\$84,438.38
RESIDUALS	(\$86,631.96)	(\$110,900.43)	(\$28,170.15)	(\$157,838.76)	(\$224,018.79)	(\$204,983.13)	(\$44,451.19)
ANCILLARY SERVICES	\$844,310.69	\$970,455.22	\$1,019,867.29	\$1,088,911.34	\$1,118,945.17	\$1,054,715.22	\$969,816.65
TCC	\$1,239,704.07	\$1,070,797.36	\$1,632,289.45	\$2,341,744.78	\$1,612,320.73	\$1,234,535.43	\$741,348.17
	8	9	10	11	12	13	14
ENERGY	\$3,926,989.30	\$5,838,933.61	\$7,453,130.51	\$6,518,112.41	\$5,527,368.70	\$3,773,597.13	\$3,007,880.16
TRANSMISSION SERVICE	\$901,046.67	\$1,240,713.26	\$1,352,094.58	\$1,170,634.56	\$1,036,444.85	\$736,776.48	\$679,291.99
UPLIFT	\$75,501.46	\$59,588.04	\$206,541.29	\$98,348.09	\$100,812.25	\$56,063.31	\$72,050.40
RESIDUALS	\$74,703.20	(\$85,092.80)	(\$78,879.82)	(\$181,862.45)	\$74,639.58	(\$78,923.73)	(\$98,272.11)
ANCILLARY SERVICES	\$1,005,037.68	\$1,097,091.78	\$1,190,139.34	\$1,136,991.42	\$1,050,473.34	\$961,098.79	\$926,778.62
TCC	\$990,933.05	\$1,507,518.29	\$1,771,501.41	\$1,569,246.23	\$1,225,362.57	\$678,312.27	\$552,678.96
	15	16	17	18	19	20	21
ENERGY	\$3,809,871.10	\$3,988,833.62	\$4,648,756.06	\$5,496,515.25	\$6,413,840.46	\$6,484,446.96	\$7,768,123.95
TRANSMISSION SERVICE	\$814,268.86	\$848,190.68	\$1,020,294.56	\$1,061,907.40	\$1,021,398.96	\$681,164.71	\$997,167.22
UPLIFT	\$57,419.33	\$65,518.91	\$106,688.45	\$151,792.73	\$136,443.16	\$121,832.06	\$112,079.99
RESIDUALS	(\$73,198.51)	(\$111,317.32)	(\$106,404.77)	(\$192,134.92)	(\$177,508.40)	(\$211,534.24)	(\$289,728.89)
ANCILLARY SERVICES	\$890,263.90	\$1,008,105.08	\$1,032,250.79	\$1,095,214.04	\$1,130,349.91	\$1,137,548.24	\$1,172,500.34
TCC	\$799,596.64	\$733,374.00	\$1,108,902.56	\$1,146,375.82	\$975,919.31	\$162,170.70	\$1,178,884.95
	22	23	24	25	26	27	28
ENERGY	\$9,529,889.01	\$10,471,534.26	\$9,947,956.44	\$7,090,626.78	\$6,770,301.03	\$6,886,920.04	\$6,994,935.43
TRANSMISSION SERVICE	\$872,066.63	\$1,130,013.77	\$1,115,148.11	\$962,087.82	\$1,185,784.03	\$1,067,099.38	\$1,051,210.12
UPLIFT	\$243,759.57	\$159,670.07	\$218,205.52	\$219,282.66	\$265,749.41	\$125,439.63	\$182,034.09
RESIDUALS	(\$275,188.55)	(\$258,092.22)	(\$205,561.14)	(\$25,731.99)	(\$151,106.25)	(\$244,440.85)	(\$110,021.01)
ANCILLARY SERVICES	\$1,274,023.99	\$1,318,342.74	\$1,289,713.37	\$1,175,868.04	\$1,148,690.38	\$1,143,383.52	\$1,162,354.47
TCC	\$316,466.92	\$972,161.75	\$1,375,281.55	\$983,846.29	\$1,213,225.41	\$1,271,529.22	\$1,082,381.66
	29	30					
ENERGY	\$7,904,900.06	\$7,020,895.54					
TRANSMISSION SERVICE	\$1,402,232.04	\$1,048,685.72					
UPLIFT	\$304,518.60	\$50,308.04					
RESIDUALS	(\$137,992.74)	(\$172,548.14)					
ANCILLARY SERVICES	\$1,244,504.81	\$1,171,249.43					
TCC	\$1,624,160.53	\$1,011,346.37					



SETTLEMENTS REPORT
 June 2020 Settlement Adjustment
 July 8, 2020

Initial Settlement Adjustment – Market Costs Analysis

	MONDAY	TUESDAY	WEDNESDAY	THURSDAY	FRIDAY	SATURDAY	SUNDAY
	1	2	3	4	5	6	7
ENERGY	\$3,476,939.40	\$3,514,715.01	\$5,001,341.86	\$6,541,398.22	\$6,818,930.91	\$5,287,644.85	\$3,001,830.84
TRANSMISSION SERVICE	\$938,953.29	\$942,546.46	\$1,191,662.18	\$1,430,261.03	\$1,248,613.84	\$1,131,491.21	\$843,948.35
UPLIFT	\$126,736.24	\$102,997.90	\$90,084.94	\$109,629.81	\$58,554.03	\$74,889.47	\$84,438.38
RESIDUALS	(\$86,604.17)	(\$110,895.26)	(\$128,797.78)	(\$157,810.63)	(\$223,387.67)	(\$204,983.10)	(\$44,451.22)
ANCILLARY SERVICES	\$976,996.53	\$1,003,143.58	\$1,061,118.53	\$1,121,602.23	\$1,151,619.93	\$1,087,403.56	\$1,002,505.03
TCC	\$1,213,459.38	\$1,041,458.12	\$1,595,678.79	\$2,305,722.82	\$1,579,540.36	\$1,183,952.40	\$702,765.07
	8	9	10	11	12	13	14
ENERGY	\$3,926,989.07	\$5,838,934.49	\$7,453,141.52	\$6,555,805.76	\$5,763,764.83	\$3,774,241.53	\$3,008,290.23
TRANSMISSION SERVICE	\$901,046.66	\$1,240,713.24	\$1,352,094.62	\$1,172,626.29	\$1,050,561.95	\$736,827.92	\$679,339.36
UPLIFT	\$75,501.46	\$59,588.04	\$206,541.29	\$98,368.90	\$100,812.25	\$56,063.31	\$72,050.39
RESIDUALS	\$74,703.41	(\$85,093.94)	(\$78,890.82)	(\$179,642.11)	(\$156,394.99)	(\$79,177.04)	(\$98,387.34)
ANCILLARY SERVICES	\$1,037,726.04	\$1,129,780.14	\$1,222,827.76	\$1,172,743.56	\$1,100,882.81	\$993,866.31	\$959,539.88
TCC	\$970,984.68	\$1,473,436.97	\$1,732,902.71	\$1,543,003.06	\$1,201,974.69	\$663,651.58	\$532,555.16
	15	16	17	18	19	20	21
ENERGY	\$3,809,870.99	\$3,987,960.75	\$4,649,137.40	\$5,497,224.33	\$6,413,091.95	\$6,484,446.96	\$7,768,123.95
TRANSMISSION SERVICE	\$814,268.86	\$848,132.25	\$1,020,325.15	\$1,061,945.40	\$1,021,358.16	\$681,164.71	\$997,167.22
UPLIFT	\$57,419.34	\$65,518.95	\$106,688.44	\$151,792.76	\$136,443.13	\$121,832.06	\$112,079.99
RESIDUALS	(\$73,198.49)	(\$110,444.56)	(\$105,929.97)	(\$192,048.31)	(\$176,791.65)	(\$211,534.24)	(\$289,728.89)
ANCILLARY SERVICES	\$1,022,952.28	\$1,040,721.06	\$1,064,994.68	\$1,127,963.62	\$1,162,986.77	\$1,170,236.62	\$1,205,188.72
TCC	\$774,927.59	\$715,356.74	\$1,086,626.13	\$1,127,747.66	\$960,790.43	\$157,860.20	\$1,163,599.18
	22	23	24	25	26	27	28
ENERGY	\$9,529,889.01	\$10,471,547.59	\$9,950,525.74	\$7,091,743.98	\$6,771,797.46	\$6,886,920.04	\$6,994,935.43
TRANSMISSION SERVICE	\$872,066.63	\$1,130,013.77	\$1,115,502.06	\$962,135.47	\$1,186,273.02	\$1,067,099.38	\$1,051,210.12
UPLIFT	\$243,759.57	\$159,670.06	\$218,205.52	\$219,282.66	\$265,639.88	\$125,439.63	\$182,034.09
RESIDUALS	(\$275,188.55)	(\$258,105.55)	(\$202,131.44)	(\$26,284.84)	(\$164,944.21)	(\$244,440.85)	(\$110,021.01)
ANCILLARY SERVICES	\$1,306,712.37	\$1,351,031.13	\$1,323,046.85	\$1,208,629.73	\$1,181,432.29	\$1,143,383.52	\$1,162,354.47
TCC	\$309,377.00	\$964,300.35	\$1,375,281.55	\$983,846.29	\$1,213,225.41	\$1,271,529.22	\$1,082,381.66
	29	30					
ENERGY	\$7,904,900.06	\$7,020,895.54					
TRANSMISSION SERVICE	\$1,402,232.04	\$1,048,685.72					
UPLIFT	\$304,518.60	\$50,308.04					
RESIDUALS	(\$137,992.74)	(\$172,548.14)					
ANCILLARY SERVICES	\$1,244,504.81	\$1,171,249.43					
TCC	\$1,624,160.53	\$1,011,346.37					

